

# SAMUEL HEATH

**Product Number:** V720-LH-AIS

**Description:** 2 Hole wall mounted filler rough, left handed



## Standards



## Flow rates

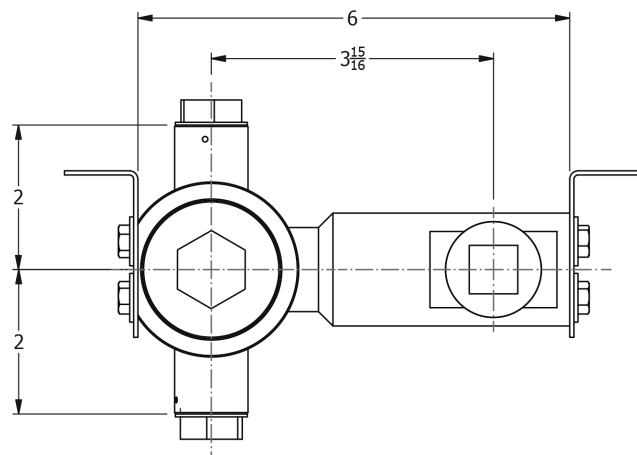
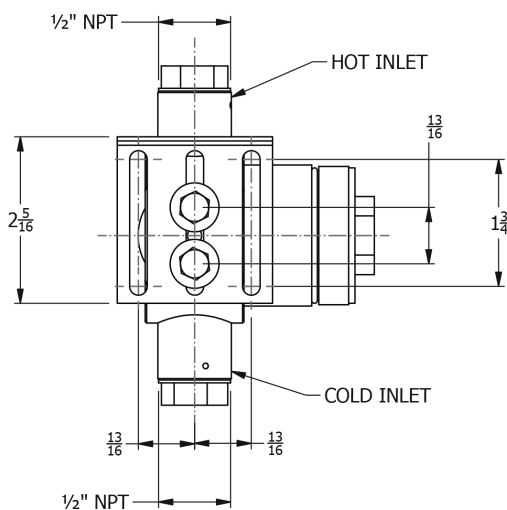
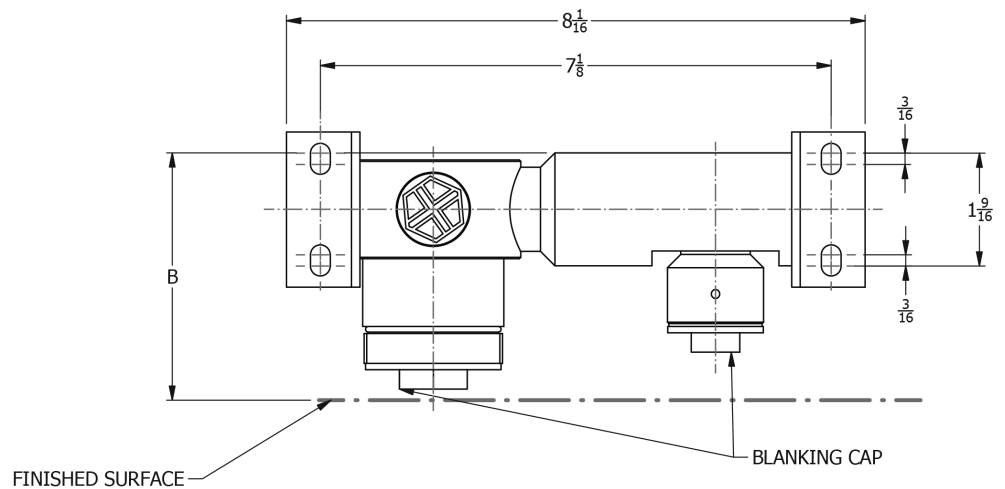
| Gallons/Min | 1.5 PSI | 7.3 PSI | 14.5 PSI | 29.0 PSI | 43.5 PSI | 58.0 PSI | 72.5 PSI |
|-------------|---------|---------|----------|----------|----------|----------|----------|
|             |         | 3.3     | 4.7      | 7.5      | 8.7      | 9.8      | 10.9     |

Flow rate data provided is indicative of each product and is given in open outlet conditions. Installation design, external connections and fittings not supplied may affect the data provided.

NOTE - 43.5 PSI minimum pressure recommended for bath filling. 7.3 PSI minimum pressure recommended for basin filling

## Specification Drawing

| TRIM   | DIMENSION "A" RANGE |
|--------|---------------------|
| V720-T | 2 7/8" TO 3 5/16"   |
| V735-T | 2 7/8" TO 3 5/16"   |



### UK Customer Service

Leopold Street  
Birmingham  
B12 0UJ  
Tel: +44 121 766 4200  
Email: info@samuel-heath.com

### US Customer Service

Federal I.D. No. 58-1504682  
Email: usa@samuel-heath.com

### Specification Enquiries

Design Centre Chelsea Harbour  
1st Floor, North Dome, London  
SW10 0XE  
Tel: 020 7352 0249  
Email: showroom@samuel-heath.com

1-20/11/2024