

SAMUEL HEATH

Product Number: V607-AIS

Description: 3/4" Concealed volume control - rough



Standards



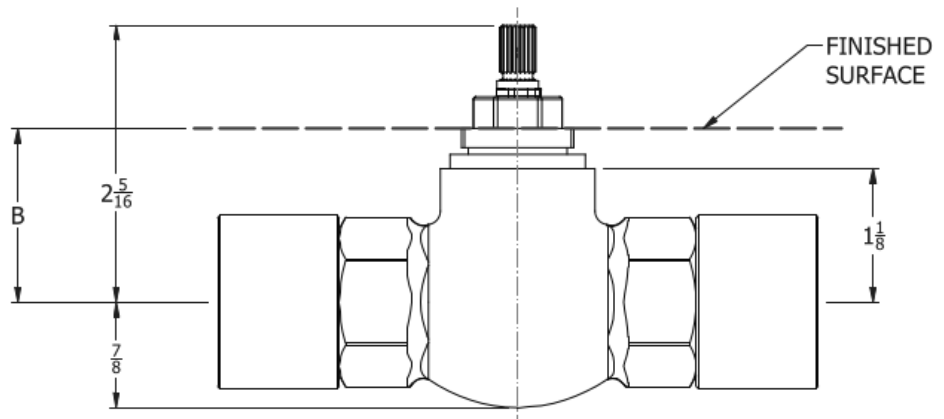
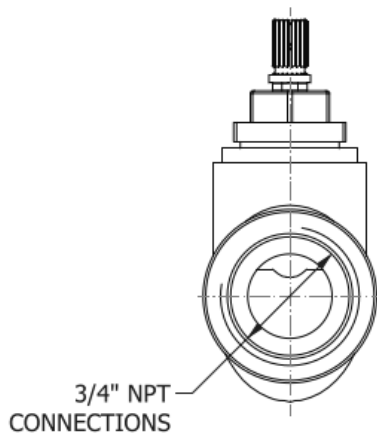
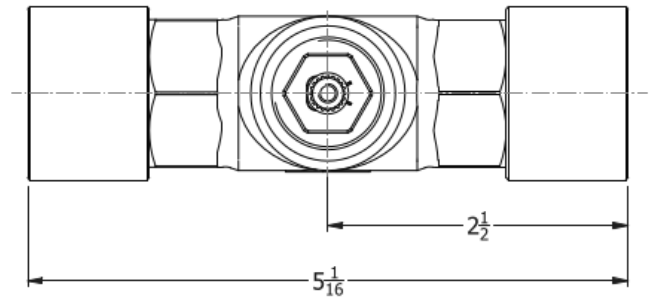
Flow rates

Gallons/Min	1.5 PSI	7.3 PSI	14.5 PSI	29.0 PSI	43.5 PSI	58.0 PSI	72.5 PSI
1/2" Feed							
3/4" Feed		1.6	5.9	7.7	9.0	10.1	10.8

Flow rate data provided is indicative of each product and is given in open outlet conditions. Installation design, external connections and fittings not supplied may affect the data provided.

Specification Drawing

TRIM	DIMENSION B RANGE
V107-T2	1 3/8" TO 2 9/16"
V207-T2	1 1/4" TO 2 1/16"
V607-T	1 1/2" TO 2"
V707-T	2 3/8" TO 2 3/4"
V807-T	2" TO 2 1/4"
T1007-T	2 3/8" TO 2 3/4"
T2007-T	2 3/8" TO 2 7/8"



**B = INSTALLATION DEPTH, SEE
V607-AIS DATA SHEET**

UK Customer Service

Leopold Street
Birmingham
B12 0UJ
Tel: +44 121 766 4200
Email: info@samuel-heath.com

US Customer Service

Federal I.D. No. 58-1504682
Email: usa@samuel-heath.com

Specification Enquiries

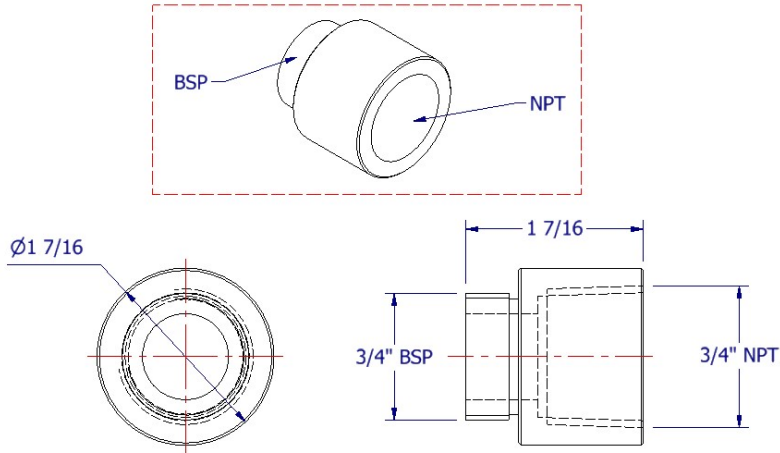
Design Centre Chelsea Harbour
1st Floor, North Dome, London
SW10 0XE
Tel: 020 7352 0249
Email: showroom@samuel-heath.com

1-20/11/2024

SAMUEL HEATH

Adaptor

Important Information



- The adaptor Installation must be carried out by a qualified plumber.
- A suitable sealant tape or sealant must be used on both the NPT and BSP threaded joints.
- Do not over tighten the NPT threaded joint.
- Do not braze, weld, or solder the connections to this adaptor.
- For further warranty information, please see the Care Leaflet provided with the product.
- Ensure the adaptor is fitted the correct way around.
- Do not use lead based acidic curing adhesive or mastic
- The use of Blue RTV silicone during installation will void the product warranty
- Use only non-silicone caulking adhesive or plumbers' putty for installation

SAMUEL HEATH
Head Office and Customer Service
Leopold Street
Birmingham
England
B12 0UJ

T: +44 (0)121 766 4200
F: +44 (0)121 772 3334

Info@samuel-heath.com
www.samuel-heath.co.uk

US Customer Service
usa@samuel-heath.com
Federal I.D. No. 58-1504682
www.samuel-heath.com

8-40661 Iss.A