

# SAMUEL HEATH

**Product Number:** V134-AIS

**Description:** 1/2" Concealed thermostatic valve - rough



## Standards

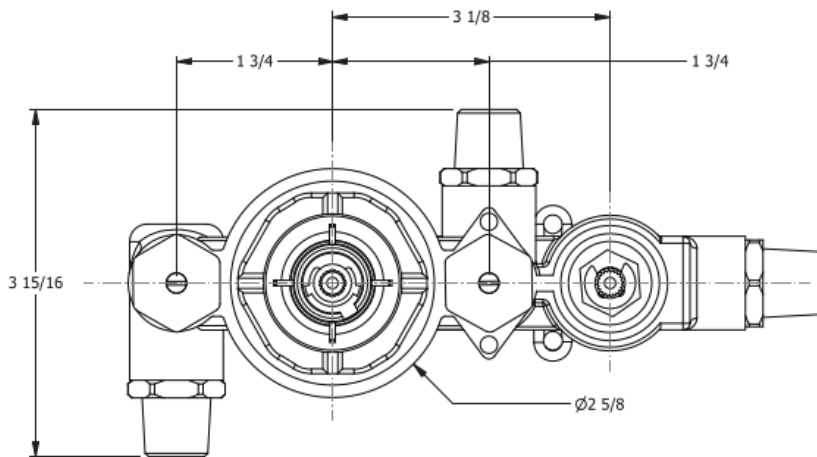


## Flow rates

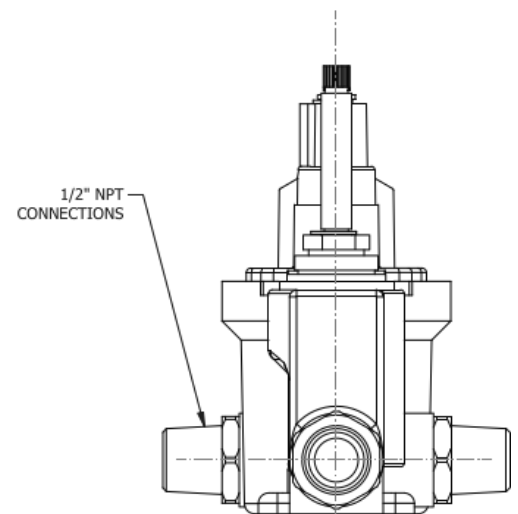
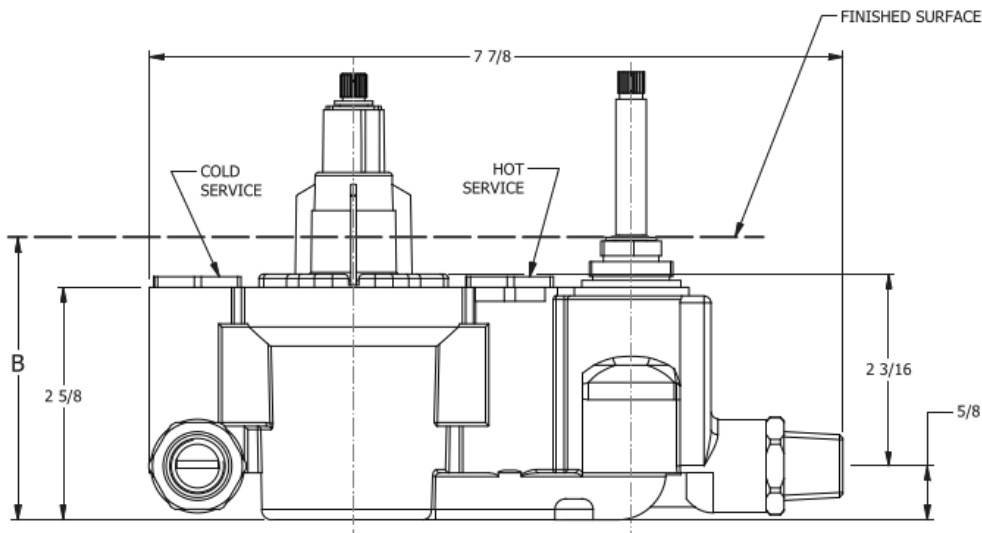
| Gallons/Min | 1.5 PSI | 7.3 PSI | 14.5 PSI | 29.0 PSI | 43.5 PSI | 58.0 PSI | 72.5 PSI |
|-------------|---------|---------|----------|----------|----------|----------|----------|
| 1/2" Feed   |         | 2.7     | 4.2      | 6.5      | 7.8      | 8.9      | 9.9      |
| 3/4" Feed   |         | 2.7     | 4.2      | 6.5      | 7.8      | 8.9      | 9.9      |

Flow rate data provided is indicative of each product and is given in open outlet conditions. Installation design, external connections and fittings not supplied may affect the data provided.

## Specification Drawing



| TRIM    | DIMENSION B RANGE   |
|---------|---------------------|
| V101-T  | 2 13/16" TO 4 3/16" |
| V201-T  | 2 7/8" TO 3 5/16"   |
| V601-T  | 2 13/16" TO 3 1/4"  |
| V701-T  | 4 11/16" TO 4 5/16" |
| V801-T  | 3 3/8" TO 3 3/4"    |
| T1001-T | 4 1/4" TO 4 3/4"    |
| T2001-T | 4 3/4" TO 5 1/8"    |



### UK Customer Service

Leopold Street  
Birmingham  
B12 0UJ  
Tel: +44 121 766 4200  
Email: info@samuel-heath.com

### US Customer Service

Federal I.D. No. 58-1504682  
Email: usa@samuel-heath.com

### Specification Enquiries

Design Centre Chelsea Harbour  
1st Floor, North Dome, London  
SW10 0XE  
Tel: 020 7352 0249  
Email: showroom@samuel-heath.com

1-04/02/2025